

ansPRACTICEDerivSketch

↓ see below

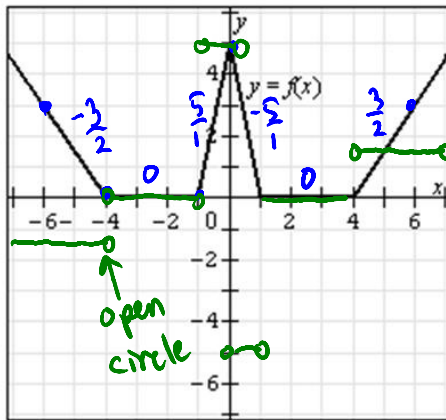
Date: _____

Name: _____

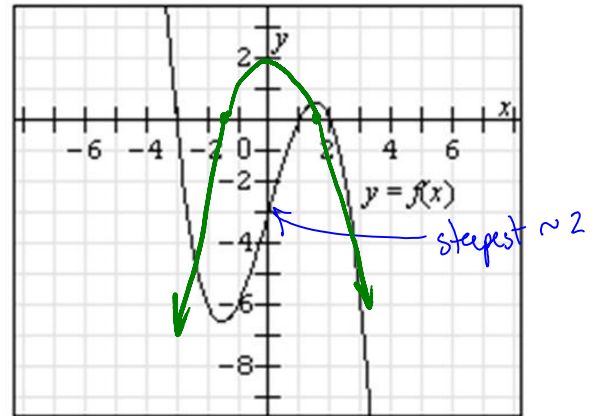
PRACTICE sketching derivatives

1. The graphs of several functions are given. Sketch the graph of each derivative.

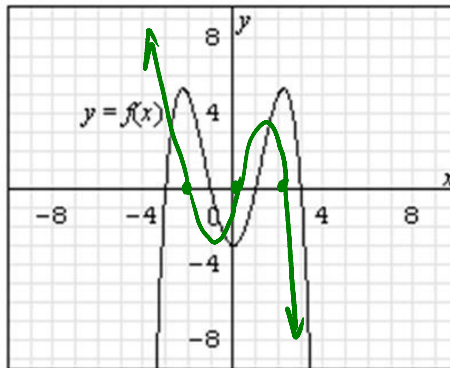
a.



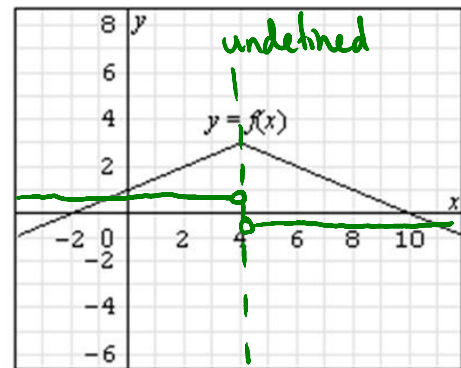
b.



c.

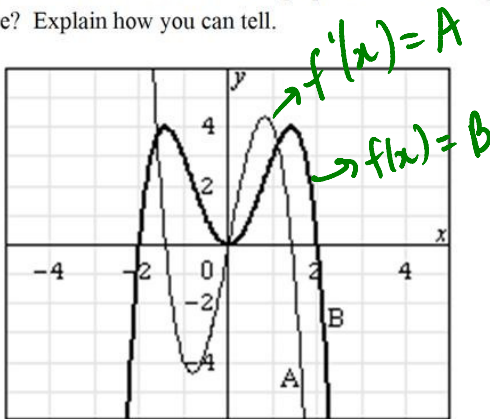


d.



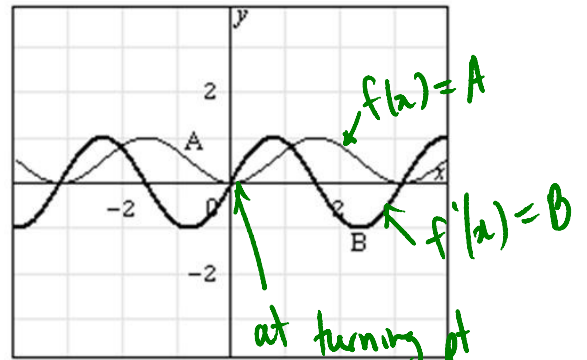
2. A function y and its derivative y' are graphed on the same grid. Which graph is the function and which graph is the derivative? Explain how you can tell.

a.



derivative function - is
one degree less
for polyn.

b.



at turning pt
slope is zero.